

RÉSIDENCE PORTES DE JUENNE



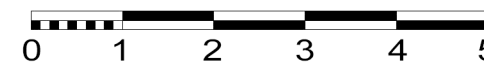
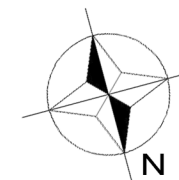
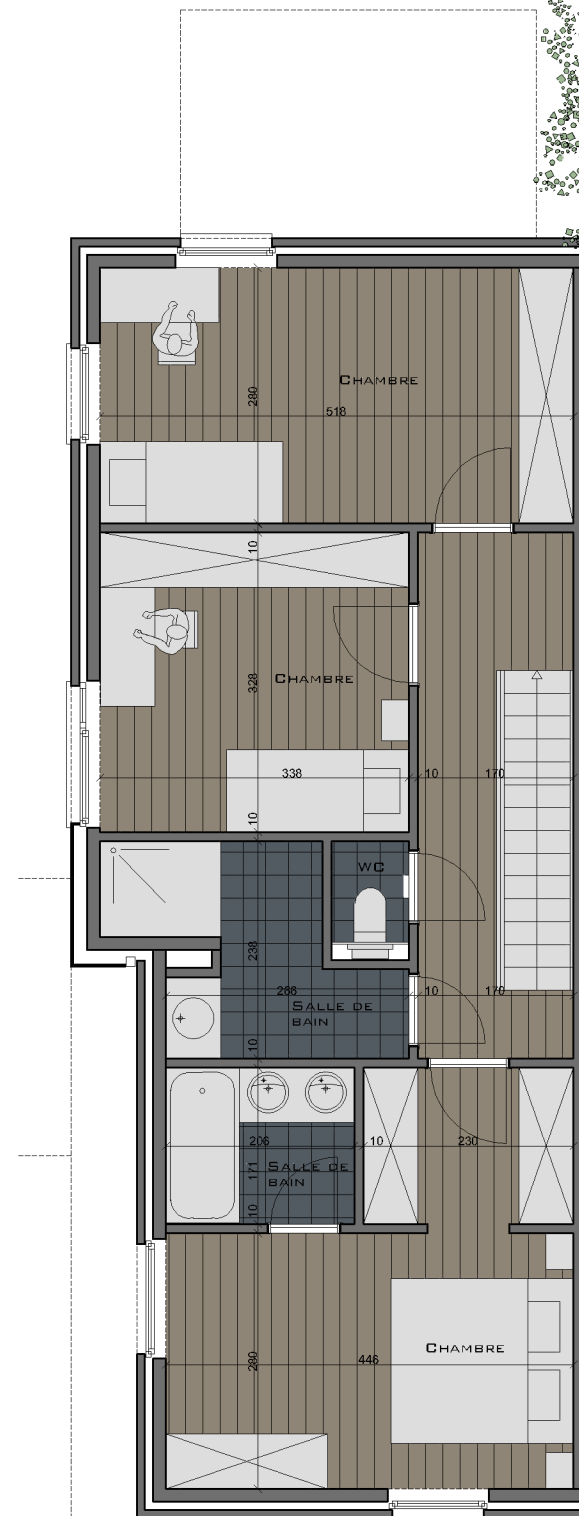
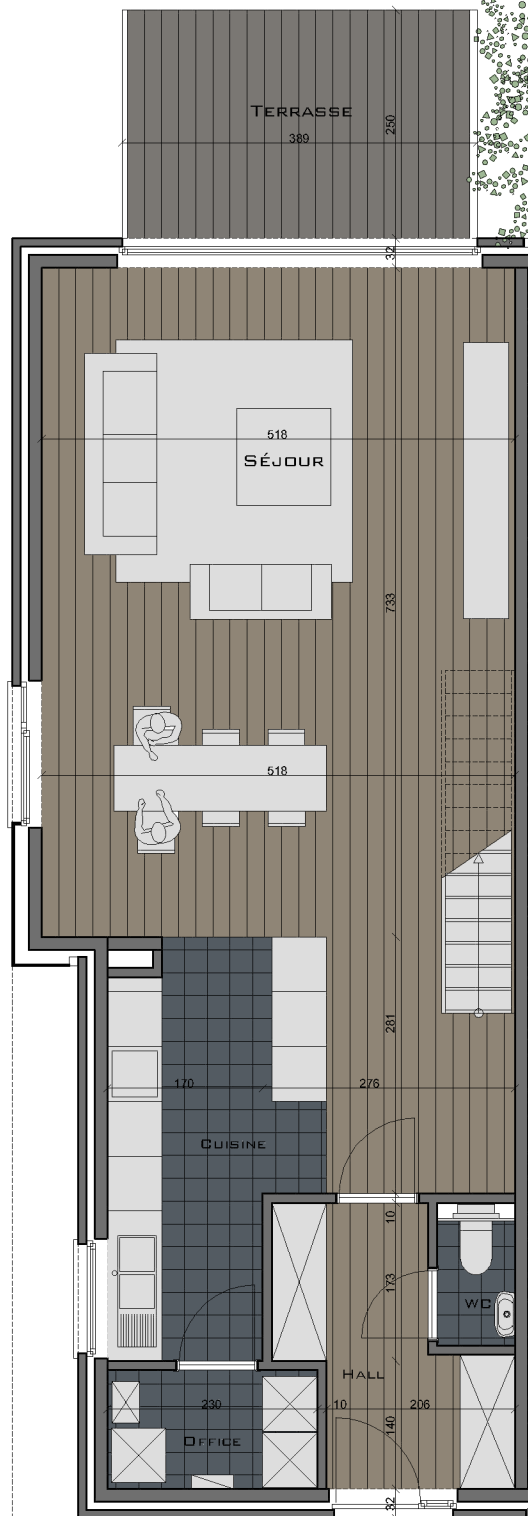
APPARTEMENT 0.1 B

DUPLEX

REZ ET 1^{ER} ETAGE

3 CHAMBRES

LOGEMENT 141,20M²
 TERRASSE 9,72M²
 JARDIN 193,40M²



Document non contractuel.
 Mobilier et dimensions à titre indicatif.

MAÎTRE D'OUVRAGE



DE CONYNCK IMMOBILIER
 QUALITY RESIDENTIAL REAL ESTATE