

RÉSIDENCE PORTES DE JUENNE



APPARTEMENT 0.4A

DUPLEX

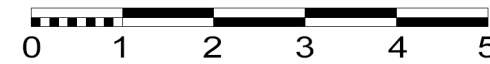
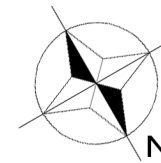
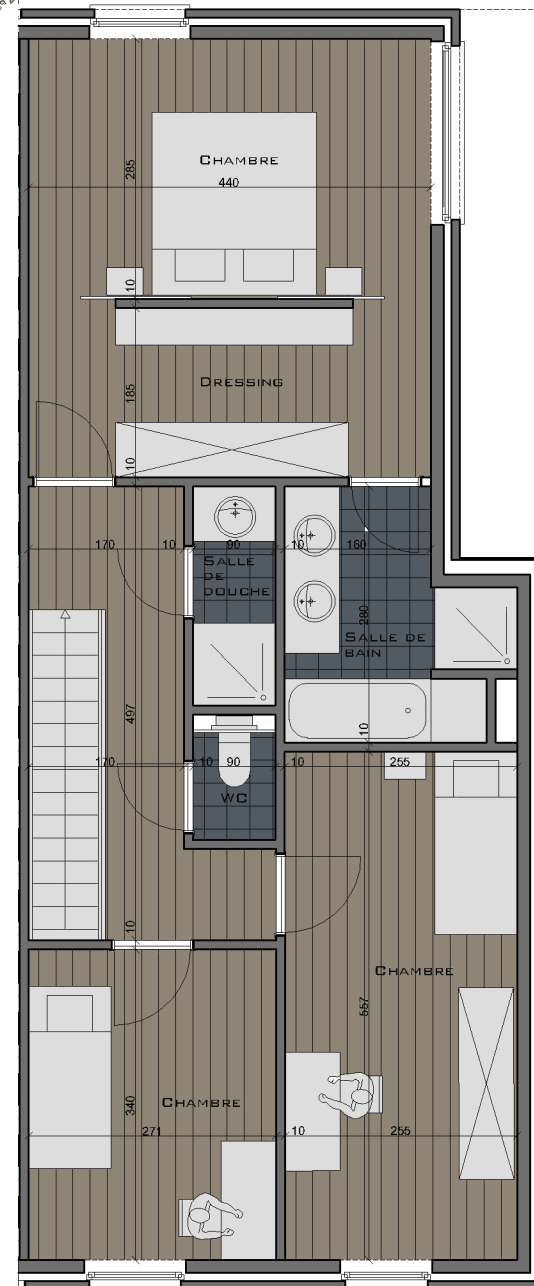
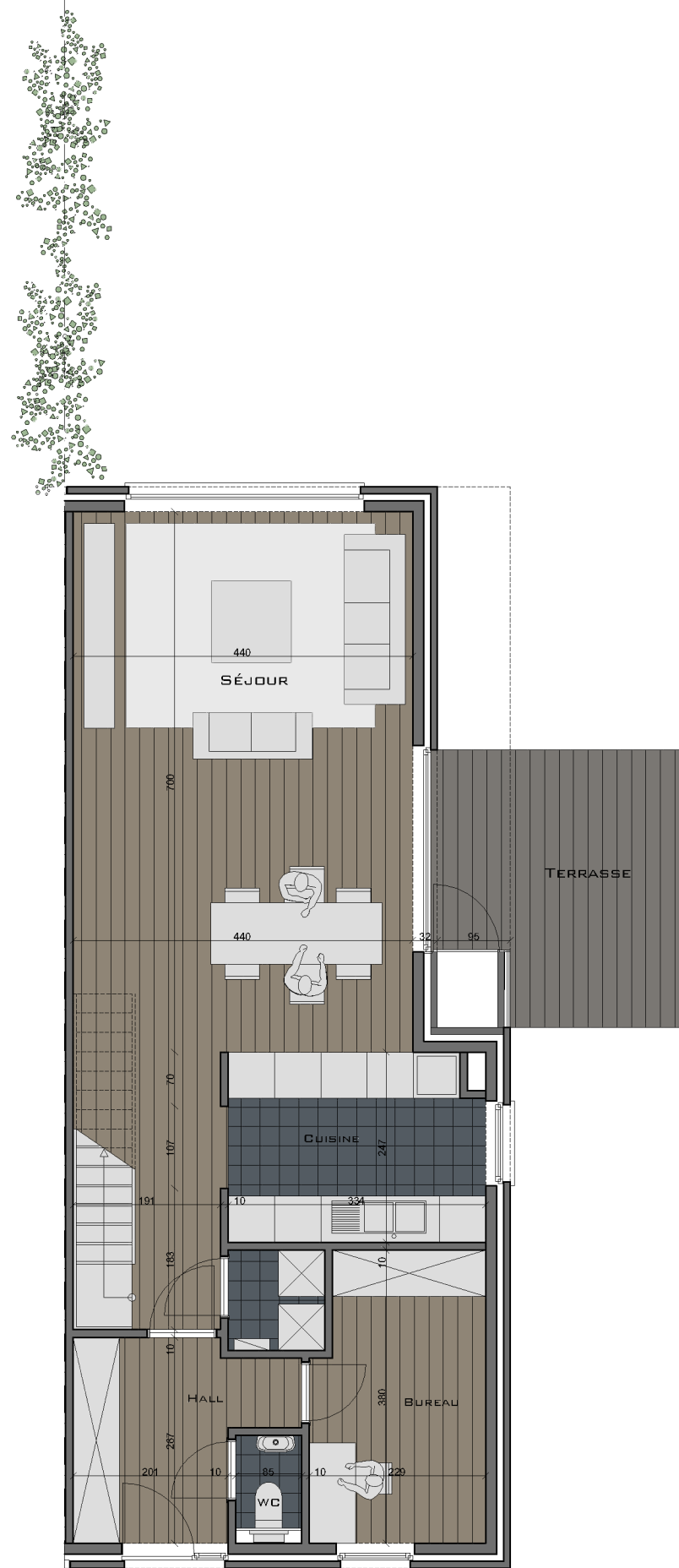
REZ ET 1^{ER} ETAGE

3 CHAMBRES + BUREAU

LOGEMENT 142,13M²

TERRASSE 11,81M²

JARDIN 527,10M²



Document non contractuel.
Mobilier et dimensions à titre indicatif.

MAÎTRE D'OUVRAGE



DE CONYNCK IMMOBILIER
QUALITY RESIDENTIAL REAL ESTATE